

Twin Force Bite Corrector Anchor Wire

Twin Force Bite Corrector Double Lock



Class II

- Have the patient bite down.
- Measure from the distal edge of the lower cuspid bracket to the distal end of the upper molar facebow tube (Figure 1).
- See the chart below for measurement ranges (A) and part numbers.

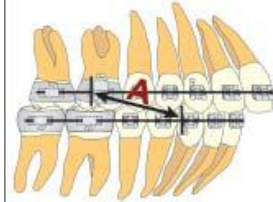


Figure 1

Class II

- Have the patient bite down.
- Measure from the distal edge of the lower cuspid bracket to the mesial end of the upper 1st upper molar tube (Figure 3).
- See the chart below for measurement ranges (A) and part numbers.

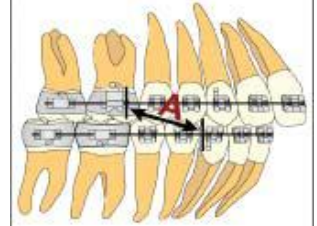


Figure 3

Class III

- Have the patient bite down.
- Measure from the distal edge of the upper cuspid bracket to the distal end of the lower 1st molar lip bumper tube (Figure 2).
- See the chart below for measurement ranges (A) and part numbers.

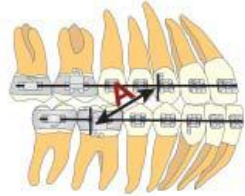


Figure 2

Class III

- Have the patient bite down.
- Measure from the distal edge of the upper cuspid bracket to the mesial end of the lower 1st molar tube (Figure 4).
- See the chart below for measurement ranges (A) and part numbers.

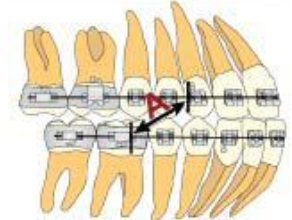


Figure 4

Twin Force Bite Corrector Anchor Wire

"A" Measurement		
Minimum (mm)	Maximum (mm)	Part Number
23	32	424-216Ti
27	36	424-215Ti

Twin Force Bite Corrector Double Lock

"A" Measurement		
Minimum (mm)	Maximum (mm)	Part Number
27	36	424-211Ti
32	48	424-210Ti